



Complete insight in your wastewater network

Take full advantage of the valuable data collected by the innovative AUTO_{ADAPT} functionality that lets you optimise your service and maintenance program for pumps, pipes and pits.

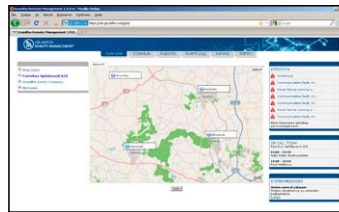
- Detect incoming rainwater
- Act on increased energy consumption
- Perform preventive maintenance and avoid clogging
- Find pumps that are in need of service
- Find pits that are over or under dimensioned in terms of capacity.

Using this data actively will help you plan and prioritise maintenance and new projects to meet the changing demands for your wastewater network.

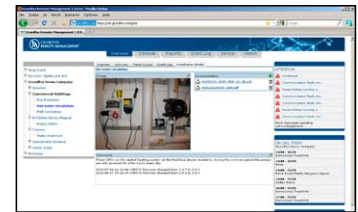
SEG AUTO_{ADAPT} and Grundfos Remote Management

– for low cost, feature-rich pump system monitoring

Grundfos Remote Management is an internet-based remote monitoring, management and reporting system for pump installations. It provides remote access to data and alarms from pumps, pump controllers and auxiliary equipment like sensors and meters. Data from pump installations is transferred to a central database and published to subscribers on a secure web server. Users have access to data from pump installations that are registered to their own account.



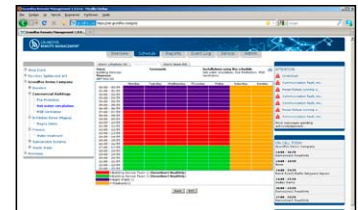
Complete overview
See the status of your entire system on a map or any digital image.



Share documentation
Upload system documentation to a secure server and make it accessible to all relevant personnel.



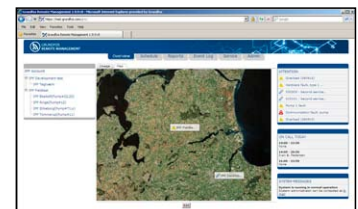
Online with your pumps
Live monitoring, analysis and adjustments from the comfort of your office.



Flexible on-call schedule
Simple planning of who responds to SMS/email alarms in rotating weekly schedules.

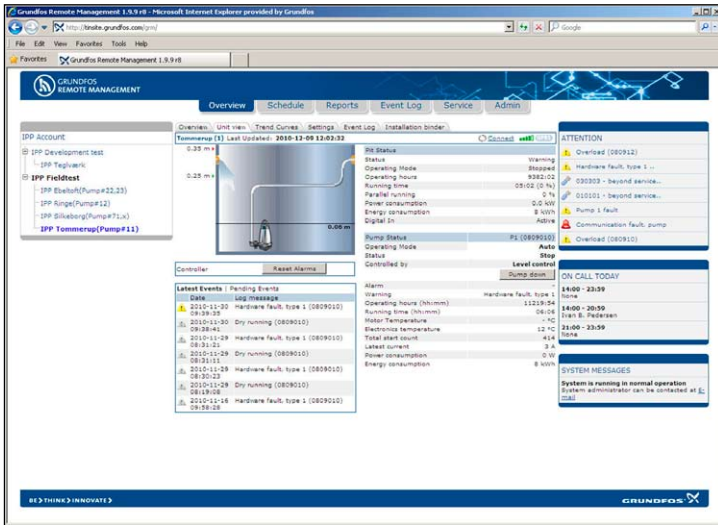


Trends and Reports
Follow system performance and reveal opportunities to reduce energy consumption.



Manage pump maintenance
Plan service work on the basis of actual operating data and get notification when service is due.



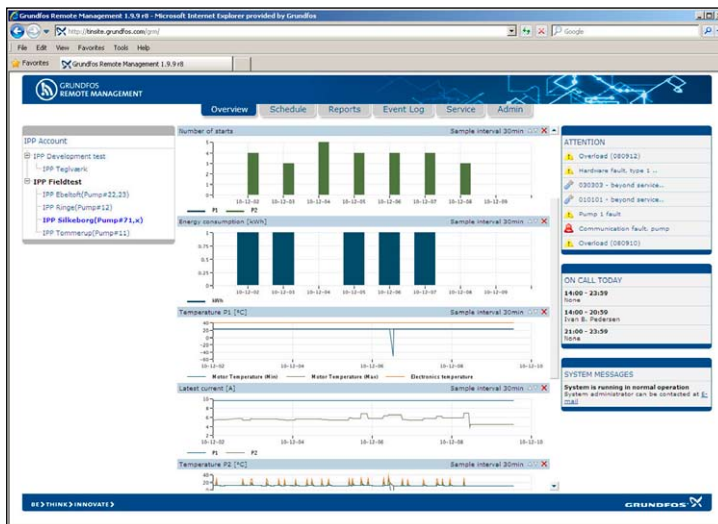


ALARMS AND WARNINGS

- High level
- Blocked motor/pump
- Overvoltage
- Undervoltage
- Overload
- Motor temperature
- Thermal relay in motor
- Sensor fault
- Communication fault, missing heartbeat
- ...and more.

OPERATIONAL DATA

- Energy consumption
- Operation time
- Number of starts
- Parallel running
- Water level
- Motor current and temperature
- ...and more.



REMOTE CONTROL

- Manual operation (forced start)
- Alarm reset
- Adjust start, stop and alarm levels.

